



Facility Name: Paradise On the Beach

Facility Type: resort

Facility Address: Williams Esplanade, Palm Cove, Cairns

**Phone: 07 4055 3300 – within Australia
+61 7 4055 3300 – International**

**Fax: 07 4055 3991 – within Australia
+61 7 4055 3391 – International**

Email: resort@paradiseonthebeach.com

Web: www.paradiseonthebeach.com

Room numbers: One accessible room no interconnecting rooms



Paradise On the Beach, Palm Cove

Parking:

There is one designated accessible parking bay on the Esplanade located near the front drop off area. There is undercover car parking in the resort but none are designated accessible. Two car parks located closest to reception will be wide enough to allow easy access if required.



Undercover car parking area

Entry into reception

At the front of the resort you will find a set of four steps and a ramp to lead into the reception foyer. The ramp also services Apres bar and Grill.

Entry into reception is through a large open area there is a small threshold lip of 20mm leading from the deck into the reception foyer.

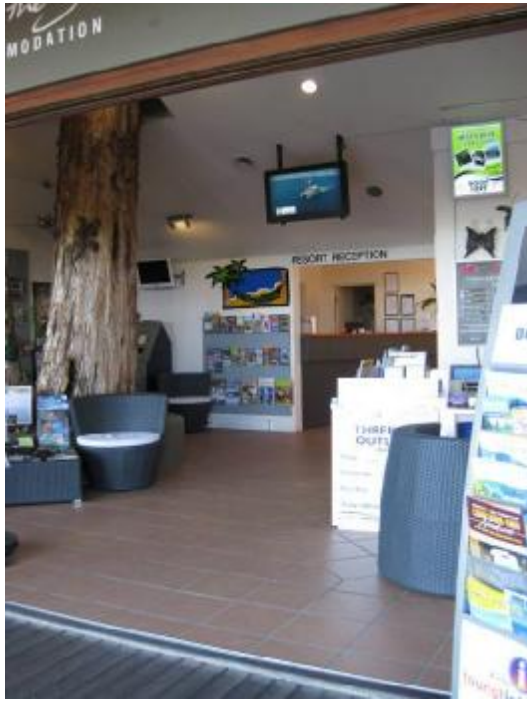
Reception is a level tiled area with ample seating. The reception counter does not have a lowered section for wheel chairs but staff will assist guests if required.



Ramp leading to Reception



Reception Desk



Reception entry (note small lip)



Front entry deck leading to Apres Bar & Grill

Access to public areas

There is good access to the upper pool deck, The pool at this stage is not accessible due to steps down into the pool area. The resort are looking to rectify this in the future.



Pool deck area looking down on the pool

Lift

A lift is provided to take guests to the accessible room. The lift entry is 900mm clear space, the lift car is 1580mm wide by 1370mm deep.

Accommodation:

The accessible guest room is on level access with no steps or sills. The door handles are D style levers and the door widths are 830mm.

Room furniture can be moved to suit the guest's requirements, just notify staff when booking.

The rooms are configured with two single beds (see photo). Under bed clearance is 100mm and the height to the top of bed is 540mm. A double bed is also provided in the room annex with an under clearance of 100mm and a top height of 540mm.

The widest point from the side of the bed will vary with the configuration but you will on average achieve 660-1200mm.

A small dining table is provided in the room with a top height of 750mm and a height from floor to underside of 700mm. There is a coffee/tea making facility microwave oven and small bar fridge provided for your convenience. The TV and AC can be controlled by remote from the bed. The height of the cupboard clothes rail is 1700mm above the floor.

All the switches are located 1100mm from the floor in easily accessible locations.

The room balcony is easily accessible with a recessed track. The balcony overlooks the resort pool and is very spacious with comfortable furniture to lounge in.



Single bed configuration



Double bed configured annex



Room view looking to balcony



Pool view from balcony



Balcony furniture

Sanitary Facilities:

Entry into the accessible shower and toilet is through an 820mm door. The facility is a combined toilet and shower with a dimension of 2750mm long by 1860mm wide. The shower and toilet is divided by a glass screen giving the shower area a dimension of 960mm long by 850mm wide. No drop down seat is provided but a seat or shower commode can be hired from Phoenix Medical and Prescription and delivered to the accommodation if required for approx \$15 per week. Contact Phoenix for more details on 4041 3629.

Grab rails are fitted to the shower both vertical and an inclined horizontal (see photo)

A flick mix tap is provided and is easily reachable when sitting in front of the shower.

A single grab rail is fitted to the toilet and is mounted on an incline from 830 - 900mm from the floor to top of grab rail (see photo). The toilet is mounted 540mm from wall to centre of pan and 500mm from the screen to centre of pan. The seat height is 450mm from floor to top of seat. The sink is located 1000mm from the front of the pan.

Clearance to the under side of the sink is 700mm with a top height of 875mm. The base of the mirror from floor is 860mm.



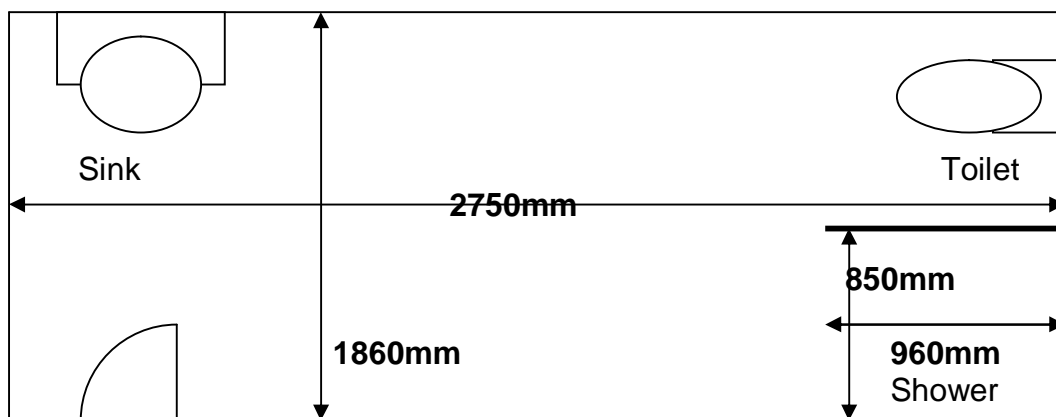
Shower and screen configuration



Toilet grab rail configuration



Sink configuration



General:

Staff are very friendly and will assist with baggage if required.

Assistance dogs are welcome on the premises.

The accommodation is located a short stroll from the CBD and you will find many great restaurants located along the esplanade and within the CBD as well as great shopping.