



**Facility Name: Rydges Sabaya Resort**

**Facility Type: Resort**

**Facility Address: 87 Port Douglas Rd, Port Douglas**

**Phone: 07 4099 8900 – within Australia  
+61 7 4099 8900 – International**

**Fax: 07 4099 8901 – within Australia  
+61 7 4099 8901– International**

**Email: [reservations\\_portdouglas@rydges.com](mailto:reservations_portdouglas@rydges.com)**

**Web: [www.rydges.com/portdouglas](http://www.rydges.com/portdouglas)**

**Room numbers: Two accessible one bedroom apartments.**



### **Parking:**

There is one accessible parking bay located beside the resort for guest with a disability.

If travelling by coach or taxi there is an accessible set down area immediately in front of the resort.



Accessible car park



Access ramp from car park to resort

### **Entry into reception:**

Entry into the resort is via a well constructed ramp located beside 3 steps. The ramp is 1100mm wide but does not have hand rails.

Reception is a large tiled level area with ample seating. The reception counter has a lowered counter for guests using wheel chairs and staff will assist where possible.



Bottom of reception entry ramp



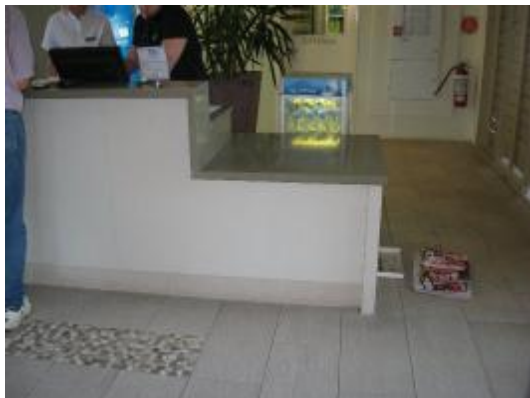
top of reception entry ramp



Steps leading to reception



Reception viewed from top of ramp



Lowered accessible counter

### **Access to public areas**

There is easy access to the following public areas:

- Sakinah House Restaurant
- Lotus Lounge Bar
- Grand Ballroom
- Pool Area
- Palm Garden
- 2<sup>nd</sup> Floor of Block 4
- Car park

### **Dining Rooms**

There is good level access to and from the dining area. There is 1280mm clear space at the entry and exit points.



Access to Sakinah House restaurant



Access from Sakinah House restaurant



Access to lower level of Lotus Lounge



Access to upper level of Lotus Lounge



Access to Palm Garden



Access to Palm Garden from reception



Access to Grand Ballroom



Access to second floor Block 4



Pool Access

### **Accommodation:**

The accessible guest rooms are on level access with no steps or sills. The doors are easy opening and the door handles are D style levers. The clear opening width of the doors is 920mm.

Room furniture can be moved to suit the guest's requirements.

The main accessible bed room has a zip king size bed that will convert to two king single beds. There is ample room to move around it or it can be moved easily to allow greater room to one side. There is 1500 mm clear space at the widest point. Under bed clearance is 100mm; height to the top of the mattress is 520mm.

The desk has a top height of 750mm and an under side clear height of 610mm. The clothes hanging rail is 1650mm from the floor.



Access paths leading to accessible rooms



Accessible room doors showing contrasting numbering and Braille on room numbers



Level entry into accessible room



Entry into accessible bedroom



Clear space at main bed

## Accessible Lounge:

Lounge furniture can be moved to make room as required, please ask staff if assistance is required.



Lounge room



Flat screen TV



Kitchen

## Sanitary Facilities:

Entry into the accessible shower and toilet is through a wide door with a clear width of 900mm.

The facility is a combined toilet and shower. The shower is hob less and is easily accessible with horizontal and vertical grab rails. The shower is fitted with a fold down seat that is 960mm long by 410 wide and 470mm above the floor. The shower has a flick mix tap and adjustable shower rose.

Grab rails are fitted to the toilets and are mounted 810mm from the floor to top of grab rail. The toilet seat is 460mm from floor to top of seat and 460mm from wall to centre of seat. The sink is recessed 900mm in front of the pan allowing clear access.

Clearance to the under side of the sink is 650mm with a top height of 790mm. The base of the mirror is 900mm from the floor.



Entry into accessible bathroom



Accessible roll-in shower

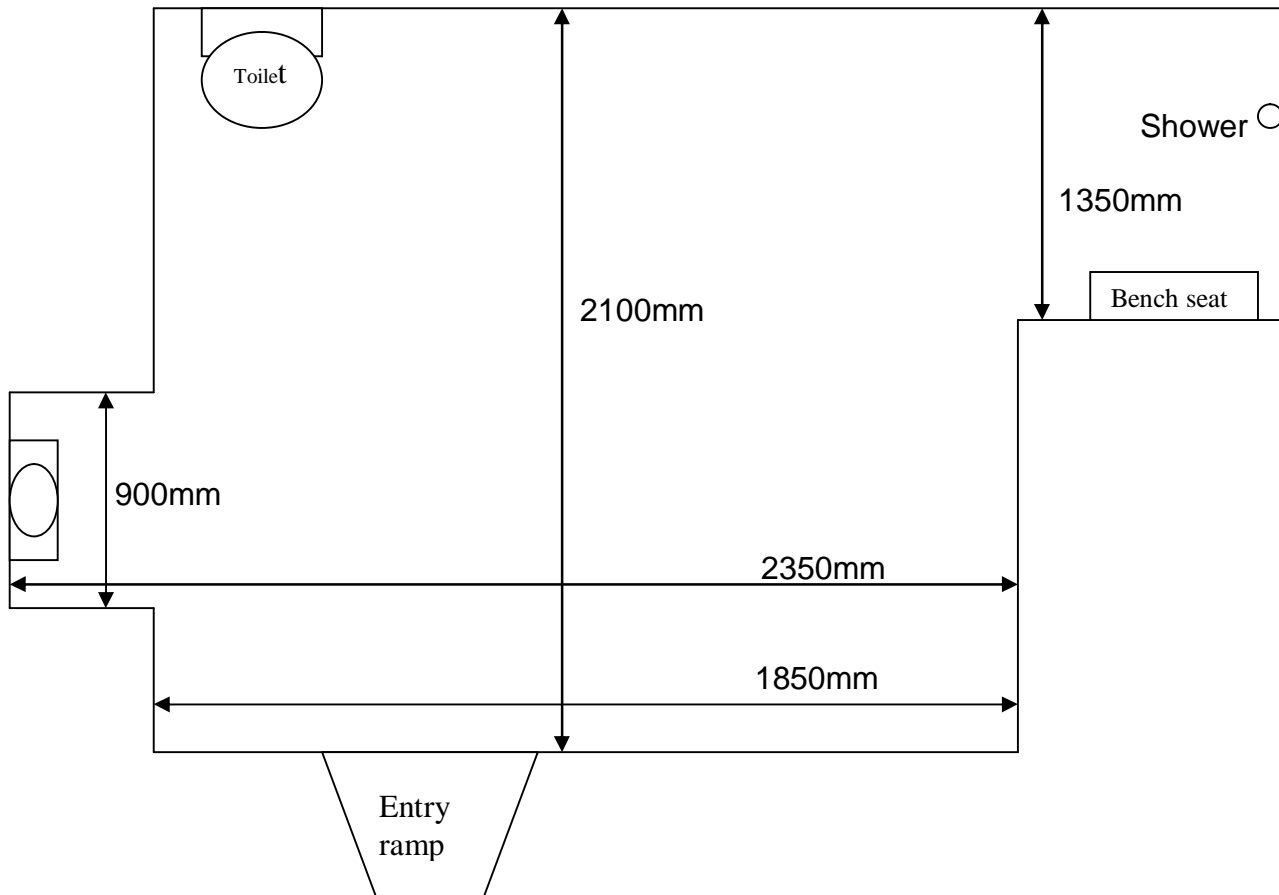


Accessible toilet and grabrails



Access to sink





**General:**

Staff are very friendly and will assist with baggage if required. 24hr guest service is provided for your convenience.

Assistance dogs are welcome and may stay with the owner in the room, the dogs must be assistance dogs only and fully registered and trained. No other pets are allowed.

Accessible public toilets are available in the resort.

For guests with vision impairment guest information is available in large print format. Contrast marking are fitted to windows and glass doors. Some signage throughout the resort is fitted with Braille.